



WELCOME

——欢迎页——

诚 信 方 能 致 远
Loyalty is the key to long term success

合 作 基 于 双 赢
Cooperation based on winning together



宁波西联精密机械制造有限公司

Ningbo YouLian Precision Machinery Manufacturing Co.,Ltd

| 专注 | 品质 | 诚信 |

**Talents develop with diligence,
and knowledge is gained through accumulation.**

目录

—CONTENTS—

01

02

03

04

05

公司介绍

Company Profile

设备介绍

Eruipments Description

生产工艺及产品介绍

production Technique and Product Description

检验流程

Quality Inspection Process

材料表

Material List



公司介绍

Company introduction

01

—CONTENTS—



- 公司简介
Company Profile
- 企业文化
Enterprise Culture
- 企业组织架构
Organisation Structure
- 服务流程
Service Process



简介：

宁波酉联精密机械制造有限公司创建于二零零九年，位于中国铸造之乡宁波市北仑区，临近港口，交通十分便利。公司通过十余年的发展积累，凭借高品质的产品、诚信的合作以及客户至上的服务，在行业中已成为首屈一指的优秀企业。

酉联占地2000平方米，企业总投资1000万，产品已远销亚洲、欧洲、北美等国家和地区。公司现年销售额已达2000多万人民币，现有产品体系：精密铸件、铜件、型钢、机械密封件等。

公司通过了ISO9001：2000质量体系认证并且始终贯彻严格的质量管理和先进的管理理念。同时凭借一流的技术管理团队，完善的质量管理体系，先进的加工设备，完备的检测手段，拥有着极强的发展潜力。

我们始终贯彻“用一流制造服务客户”的经营理念，竭诚期盼与您建立一个长久，坚固的合作伙伴关系，共创美好的未来。



Profile :

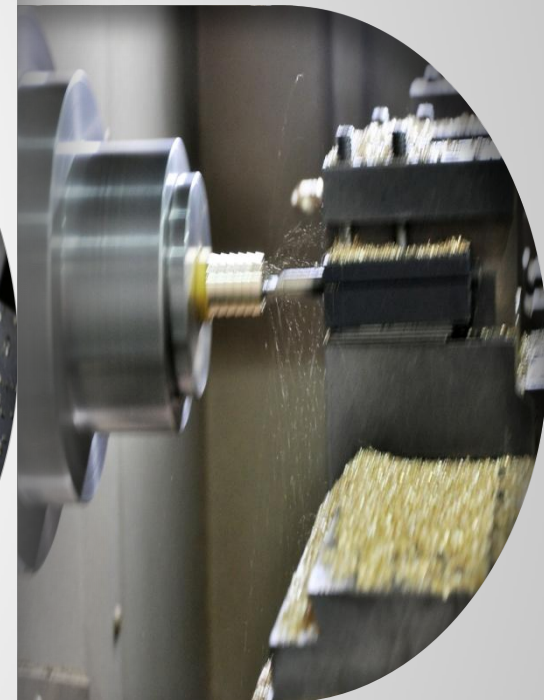
Founded in 2009, Ningbo YouLian Precision Machinery Manufacturing Co.,Ltd is located in Ningbo, China near the seaport, making transportation convenient. Over the last ten years, Youlian has grown to be a leader in the manufacturing industry through its development of high quality products, sincere cooperation, and customer-first services.

Youlian covers an area of 2,000 square meters, has a total capital of 10 million yuan, and serves clients throughout Asia, Europe and North America. Annual sales reach roughly 20 million yuan.

Our current product system is divided into precision castings, copper parts, section bars, mechanical seals and other products. We combine various types of aluminum, copper, and stainless steel into hardware fitting design and manufacturing.

Youlian is ISO 9001:2000 Quality System Certified. A commitment to strict quality control and an advanced management concept is essential to our company. With our first-class technology management team, advanced quality management system, cutting-edge processing equipment, and complete testing means, Youlian has a great capacity for development.

Our core management concept is to “serve customers with first-class manufacturing” and always deliver quality product and service. We look forward to establishing a long-lasting and strong partnership and working with you to create a beautiful future.





企业文化

Culture 

- 企业核心理念
Core Company Idea
- 企业经营方针
Business Strategy
- 企业精神
Entrepreneurial Spirit
- 服务宗旨
Service Goals
- 经营理念
Management Philosophy
- 处世准则
Code of Conduct



企业核心理念：以德兴企，以仁待人

CORE COMPANY IDEA：

Innovating with virtue, treating people with benevolence

企业精神：

以质量创造品牌，以服务维护品牌
以创新提升品牌，以品牌促进发展

ENTREPRENEURIAL SPIRIT:

Creating our brand with quality, maintaining our brand with service. Promoting our brand by innovation, advancing our brand by development.

经营理念

员工理念：自己是本岗位最高的责任者和专家

高管理念：没有永恒的加冕，只有永远的拼搏

MANAGEMENT PHILOSOPHY

Employee Concept: The employee is responsible and the specialist of their own position

Senior Management Concept: Managers strive not for eternal coronation, but for perpetual industry



处世准则：

与其强调不能做的理由，不如一起思考能做的办法

CODE OF CONDUCT

Instead of emphasizing the reasons why you can't do it, think about ways you can do it. Emphasis on teamwork and collective problem solving.

经营方针：

以质为纲、以诚为本、以德经营、以仁服务

BUSINESS POLICY

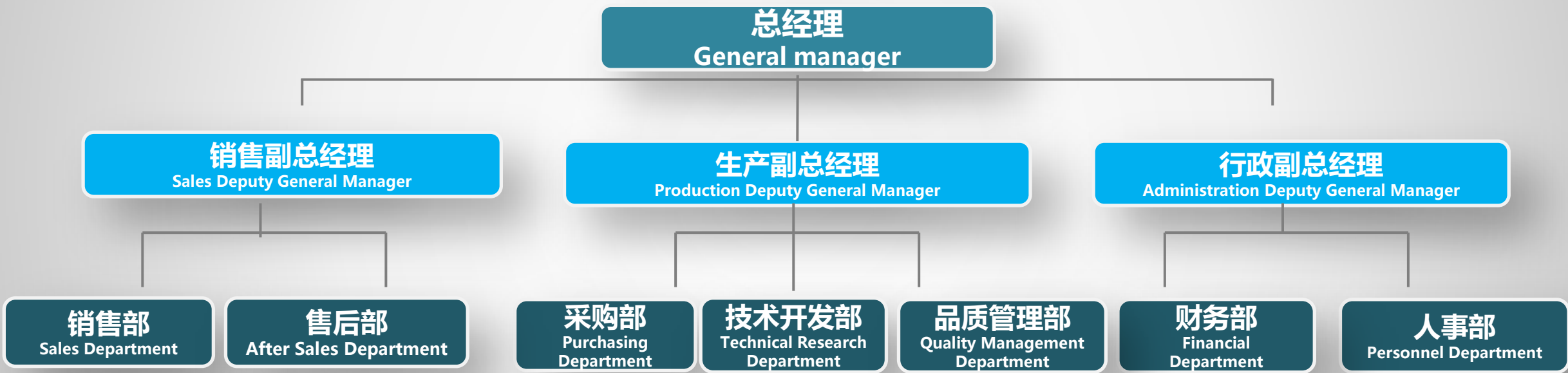
Focus on quality, honesty, ethics, and service.

服务宗旨：

时刻对产品负责，永远让客户满意

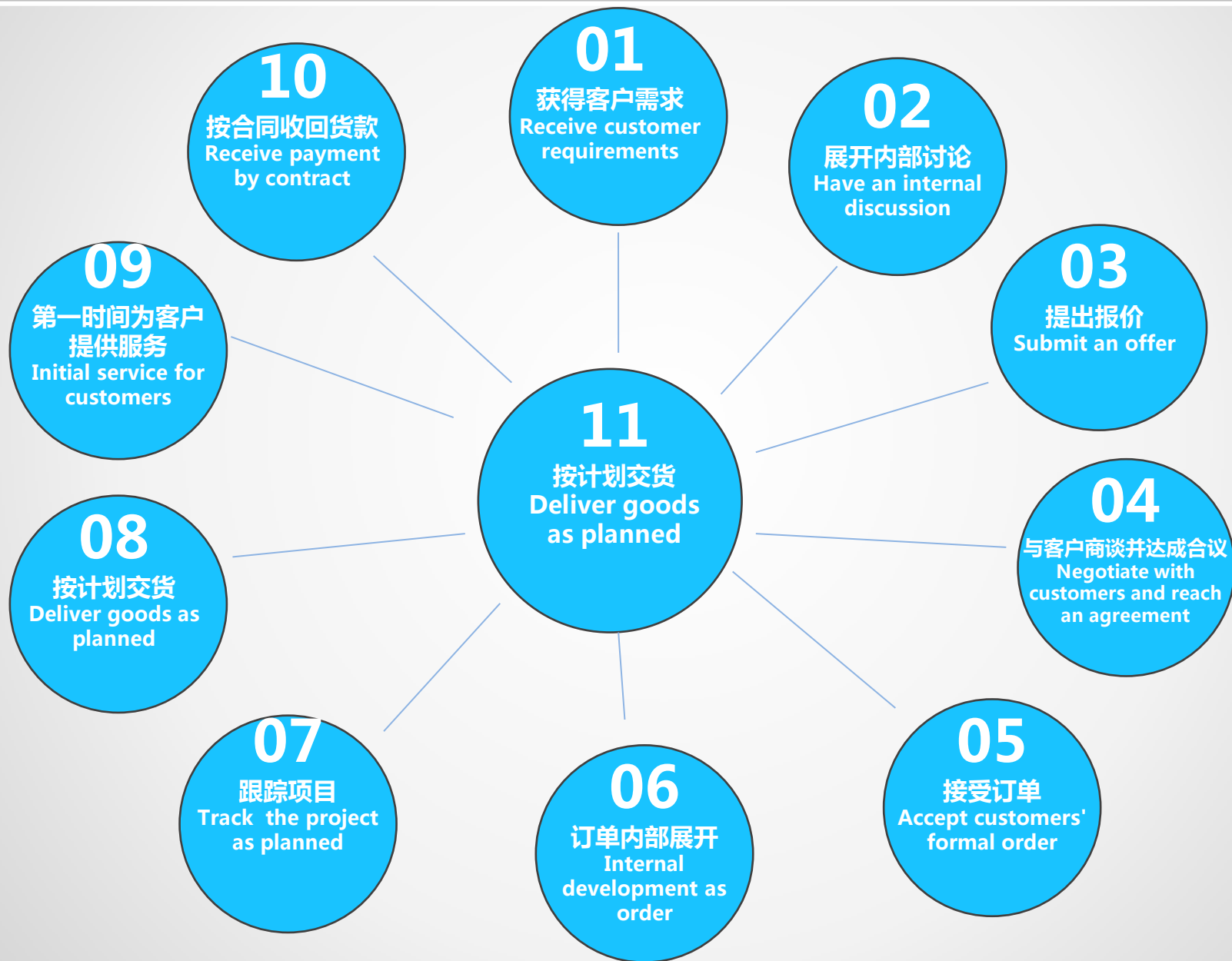
SERVICE GOALS

Pay close attention to customer satisfaction and always take responsibility for the product.





服务流程 Service Process





设备介绍

Equipments Description

02

—CONTENTS—

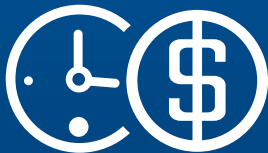




Vertical Machining Center VMC1 000 L

Technical Parameters

Specification	Unit	VMC1000L
X travel	mm	1000
Y travel	mm	600
Z travel	mm	600
Spindle nose to table surface	mm	150-750
Table size	mm	1150×600
Table load	kg	800
T slot		5×18×100
Driven type		Belt
Spindle speed	rpm	8000
Spindle motor	kW	7.5/11
Spindle torque	N.m	71.5/105
Spindle taper		BT40
Rapid traverse X/Y/Z	m/min	36/36/30
Cutting feedrate X/Y/Z	m/min	24/24/20
Machine weight	ton	6.5
Machine size	cm	280x320x280

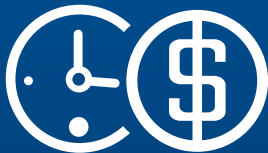




T-V856 Parts Machining Center

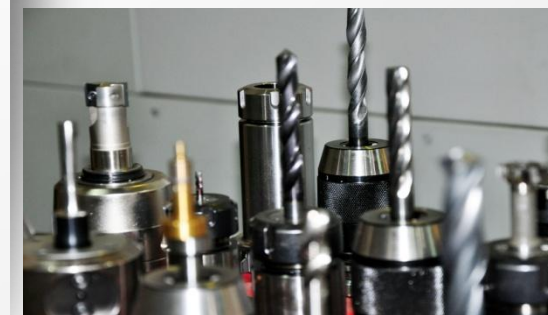
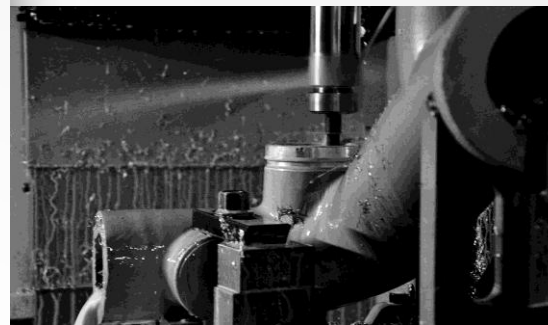
Technical Parameters

Description		T-V856	
Table	Size	mm	900*500
	TSlot		5-18*100
	Max. LoadingCapacity	kg	450
Travels	X/Y/Z Axis	mm	800/500/600
	Distance from Spindle nose to table surface	mm	125-725
Spindle	Spindle taper		BT-40
	Max. Speed	rpm	10000
	SpindleMotor	kw	7.5
Feedrate	Rapid Traves(X/Y/Z)	m/min	48/48/48
ATC	Tool Storage Capacity	T	24T
	Max.Tool Diameter(with/without adjacent tool)	mm	75/150
	Max.Tool Length	mm	300
	Max.Tool Weight	kg	8
Accuracy	Positioning	mm	0.01
	Repeating	mm	0.003
Power Supply	Motor (X/Y/Z)	kw	2.0/2.0/3.0
	Total Power Capacity	kva	15
Machine Dimension	Size(L*W*H)	mm	2250*2610*2700
	Weight	kg	4200



设备介绍 Equipments Description

加工中心图片展示 Pictures of Processing Center





Digital Control Machining Center TC25

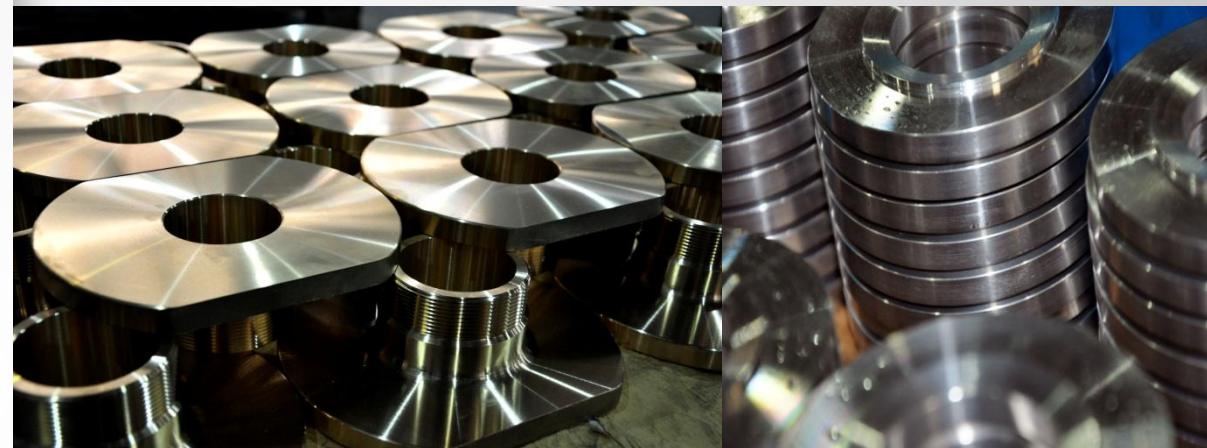
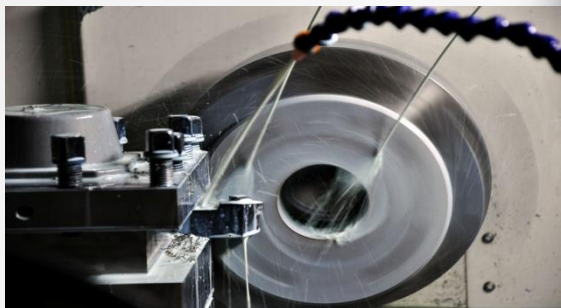
Technical Parameters

Specification	Unit	TC25		
		x500	x1000	x1500
Swing over bed	mm	Φ560		
Swing over saddle	mm	Φ320		
Max.turning diameter	mm	Φ400		
Max.turning length	mm	548	1000	1500
Spindle nose taper		A2-6		
Spindle speed	rpm	4500		
Chuck size	inch	8		
Spindle through diameter	mm	62		
X/Z travel	mm	210/610	210/1050	210/1550
X/Z rapid traverse	m/min	24/30	24/30	24/24
Turret type		HydraulicV12	HydraulicV12	HydraulicV12
Tool section	mm	25X25		
Boring bar diameter	kw	Φ40		
Milling spindle motor power	rpm	-		
Milling spindle speed	rpm	-		
Tailstock stroke	mm	400	720	1100
Sleeve diameter	mm	Φ100		
Main motor	kw	AC11/15		
Machine Weight	kg	4400	4900	5400
Machine size	cm	420x205x190	460x205x190	535x205x190
Controller		Fanuc-0i TF		



设备介绍 Equipments Description

数控车床图片展示 Pictures of CNC lathes



设备介绍 Equipments Description



钻床 Driller



气液增压系统
Gas-liquid Pressurization System



空气压缩机 Air Compressor



三坐标检测仪 CMM



千分尺和卡尺
Micrometer and Caliper



自动切割机 Cutterbar



生产工艺及 产品介绍

Production Technique
and Products Description

03

—CONTENTS—





钢模浇铸
Steel Casting



脱蜡精铸
Lost Wax Casting



低压 压铸
Low-pressure Casting



红冲锻造
Forging

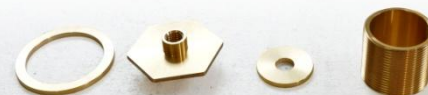


产品介绍

Product Description

铜件—红冲锻造

Copper— Forging

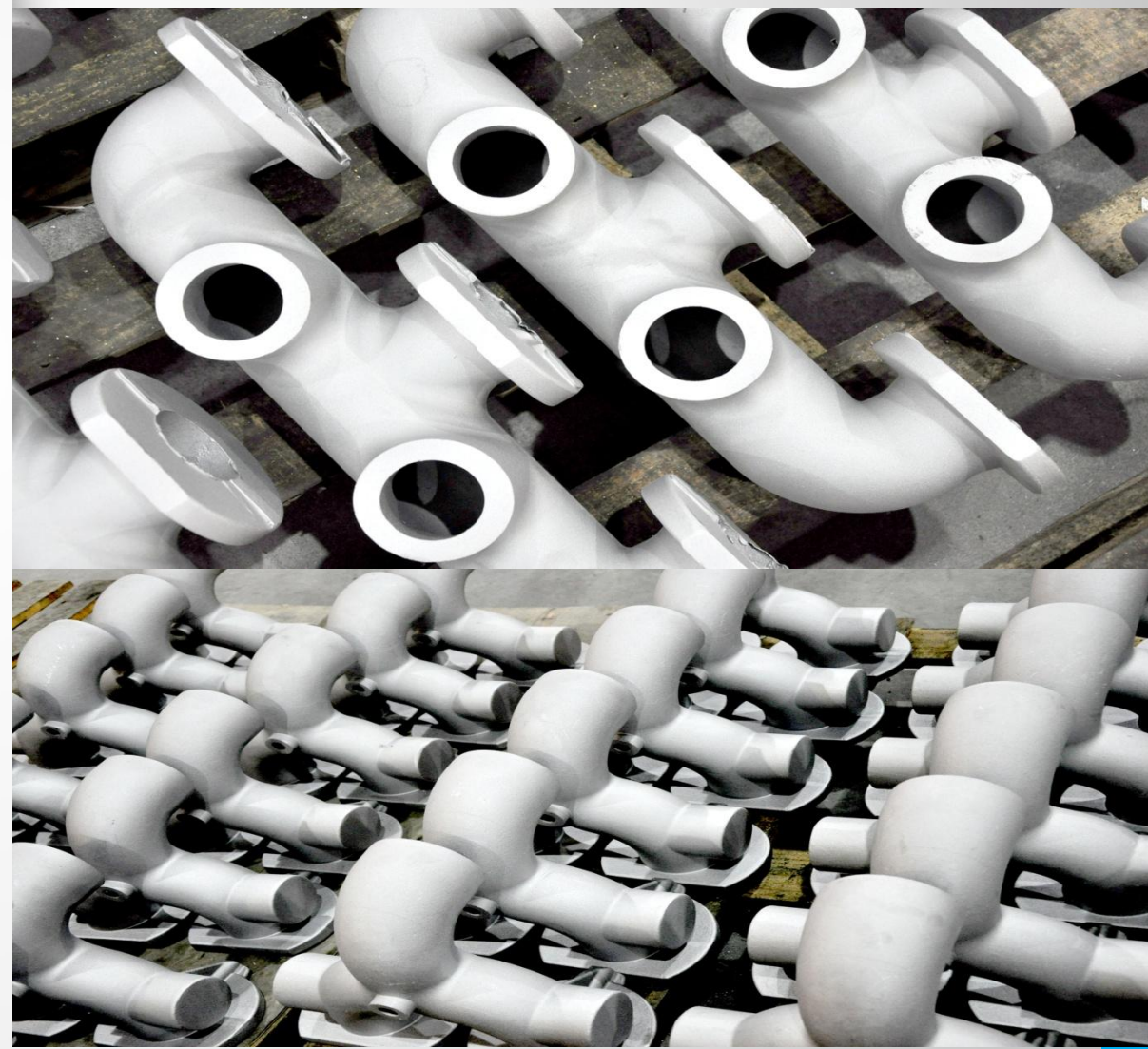




产品介绍 Product Description

铝铸件—钢模重力浇铸，低压压铸

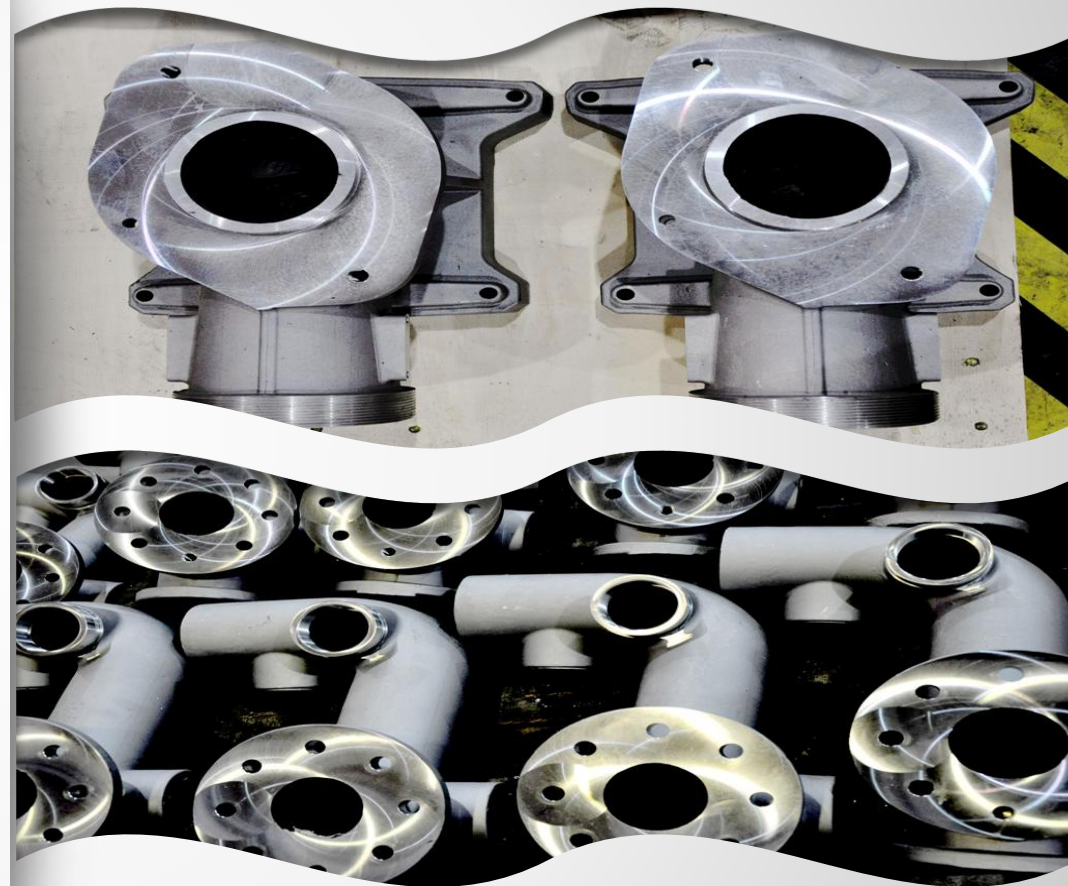
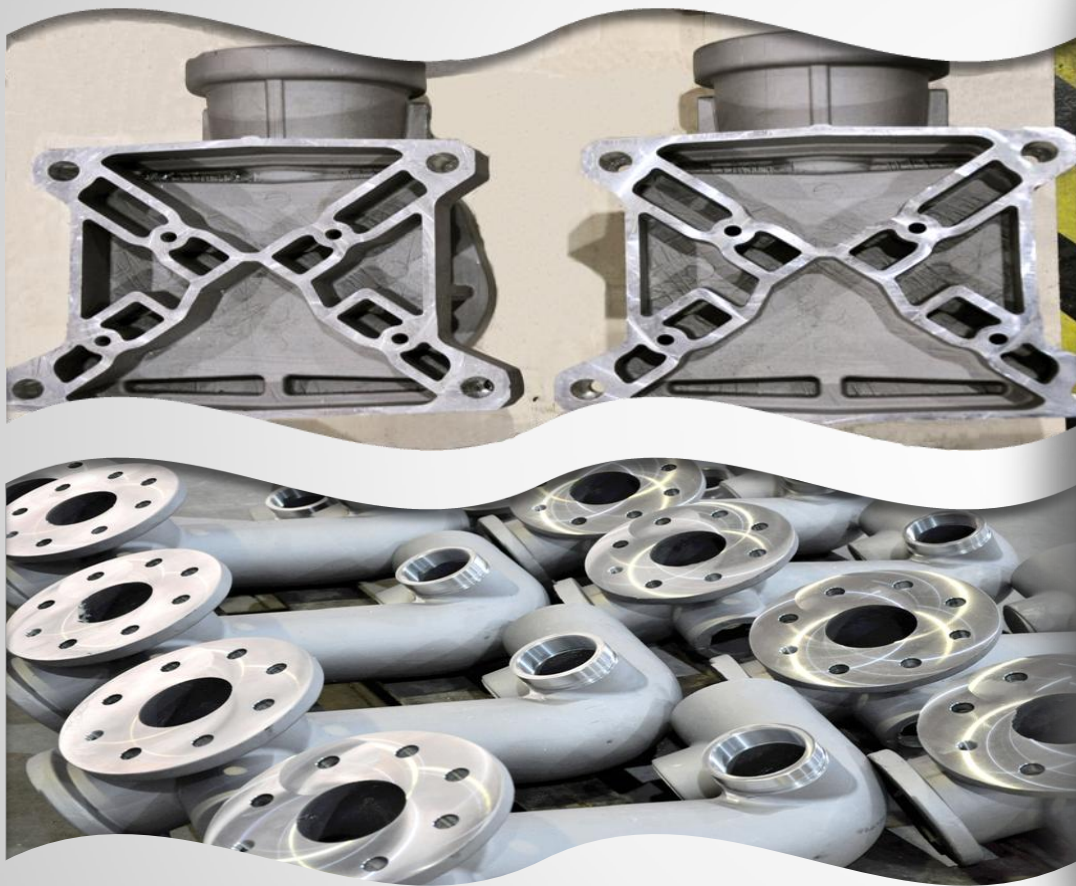
Aluminum Castings— Steel Gravity Casting , Low Pressure Casting



产品介绍 Product Description

铝铸件—钢模重力浇铸，低压压铸

Aluminum Castings— Steel Gravity Casting , Low Pressure Casting





产品介绍 Product Description

铸件—低压压铸

Castings— Low-Pressure Casting



铸件—低压压铸
Castings— Low-Pressure Casting



铸件—不锈钢脱蜡精铸

Castings— Stainless Steel Lost Wax Casting



产品介绍 Product Description

铸件—不锈钢脱蜡精铸 Castings— Stainless Steel Lost Wax Casting





产品介绍 Product Description

铸件—钢模重力浇铸，低压压铸

Castings— Steel Gravity Casting , Low Pressure Casting





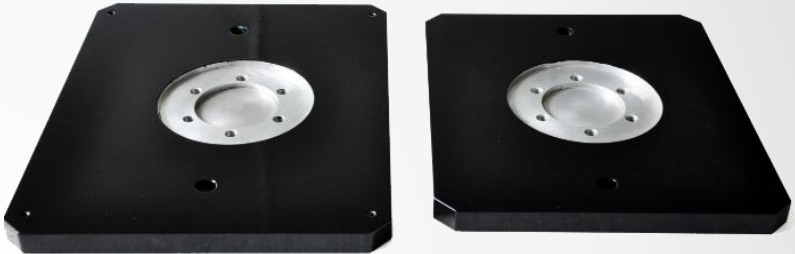
产品介绍

Product Description

铸件—表面处理 Castings— surface treatment



喷塑
Spray



喷塑
Spray



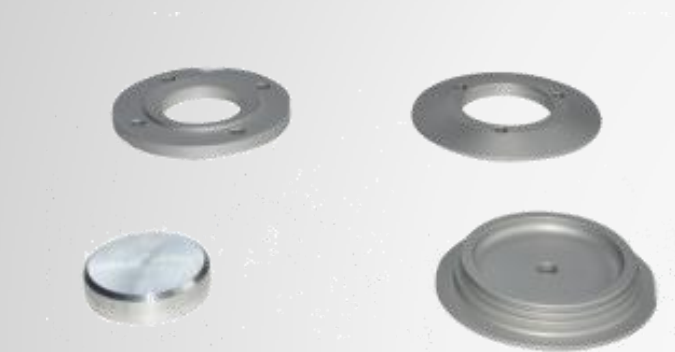
铝压铸镜面抛光
Aluminum die casting-bright finish



产品介绍 Product Description

型材—表面处理

Profiles— surface treatment



表面本色阳极处理Anodizing

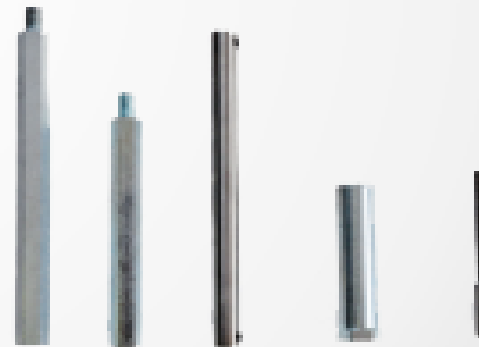
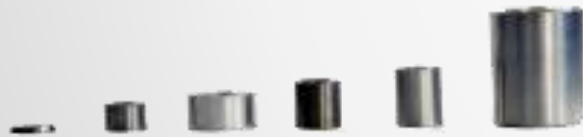
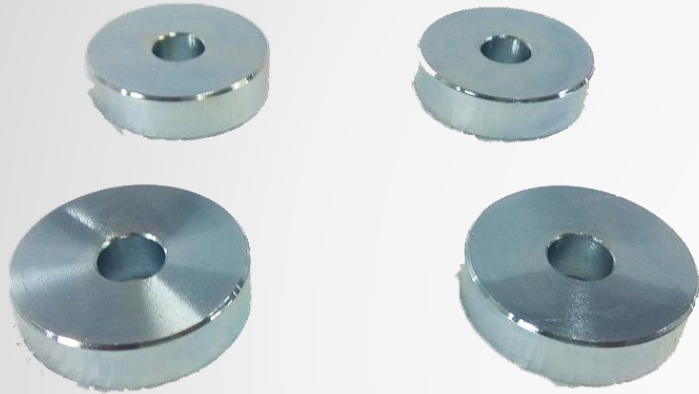


超声波清洗USC



产品介绍 Product Description

型材—表面处理 Profiles— surface treatment

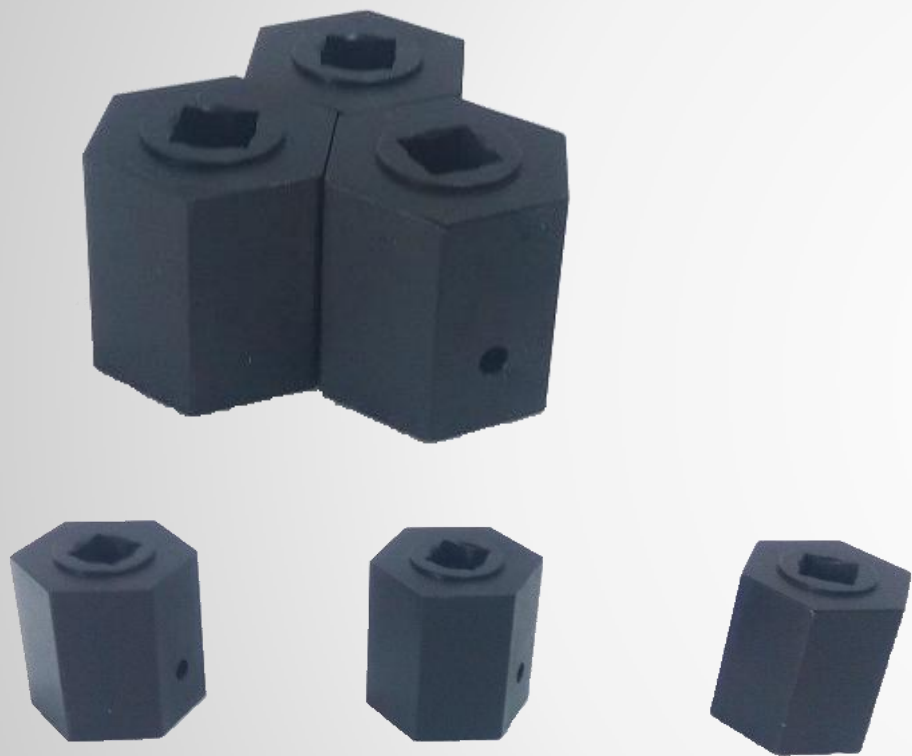


表面亮镀锌处理
Galvanized processing

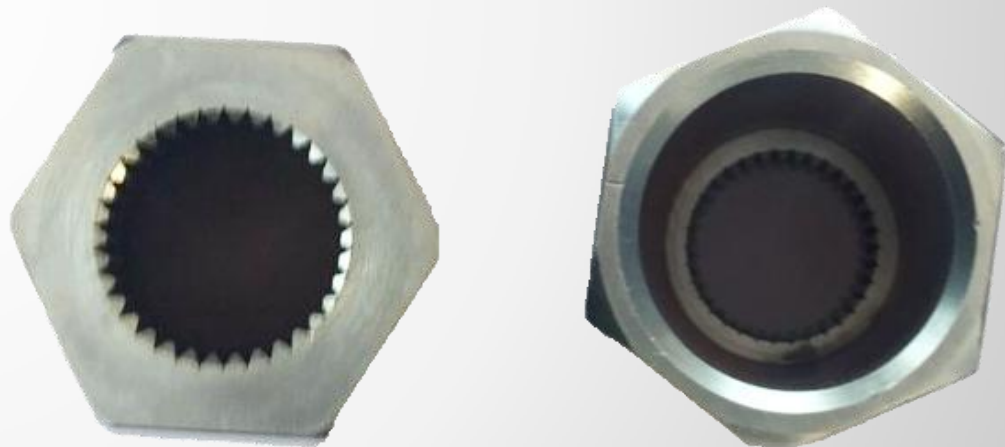


产品介绍 Product Description

型材—表面处理 Profiles— surface treatment



表面黑色镀锌镍合金 Zn-Ni Alloy Plating



拉槽，表面镀三价蓝白锌
Galvanized processing



04

—CONTENTS—



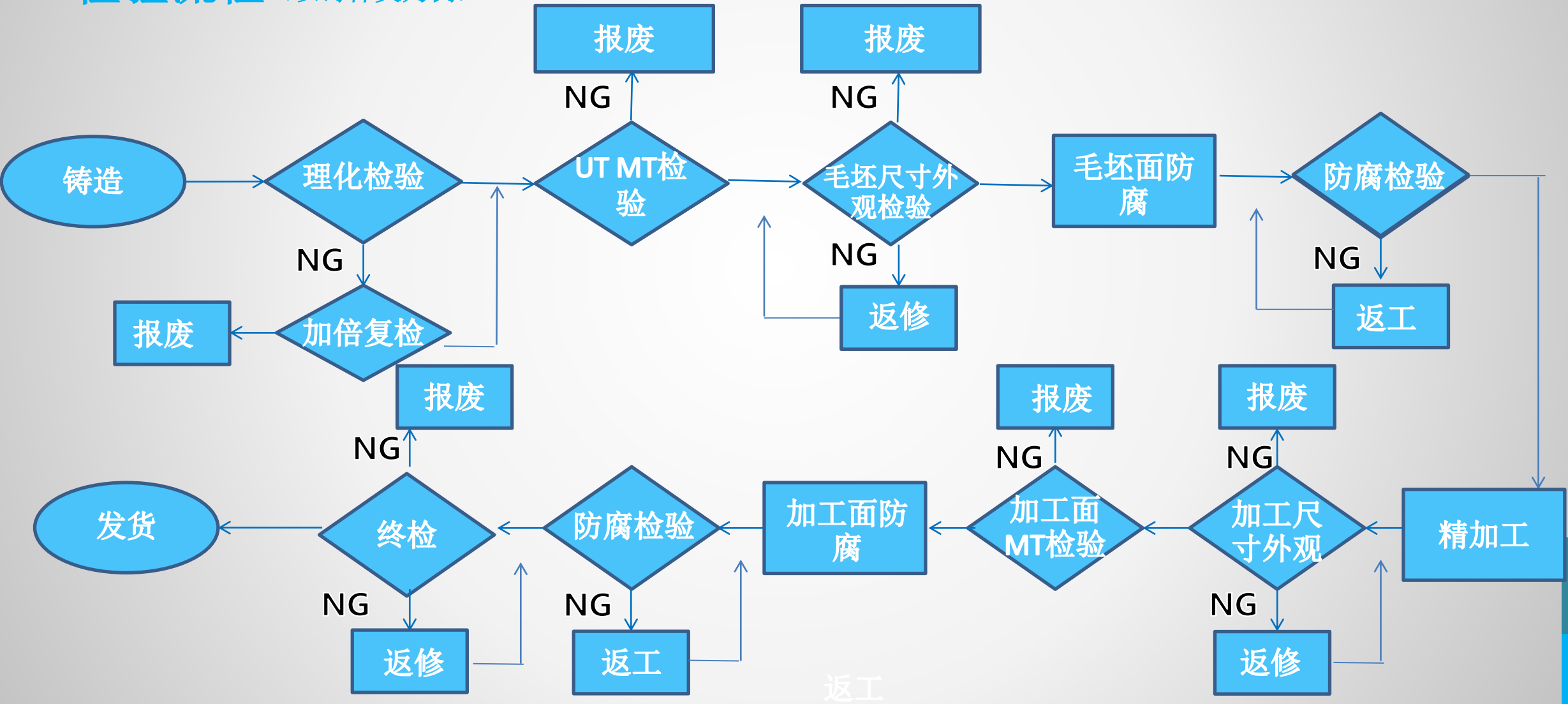
检验流程

Quality Inspection Process





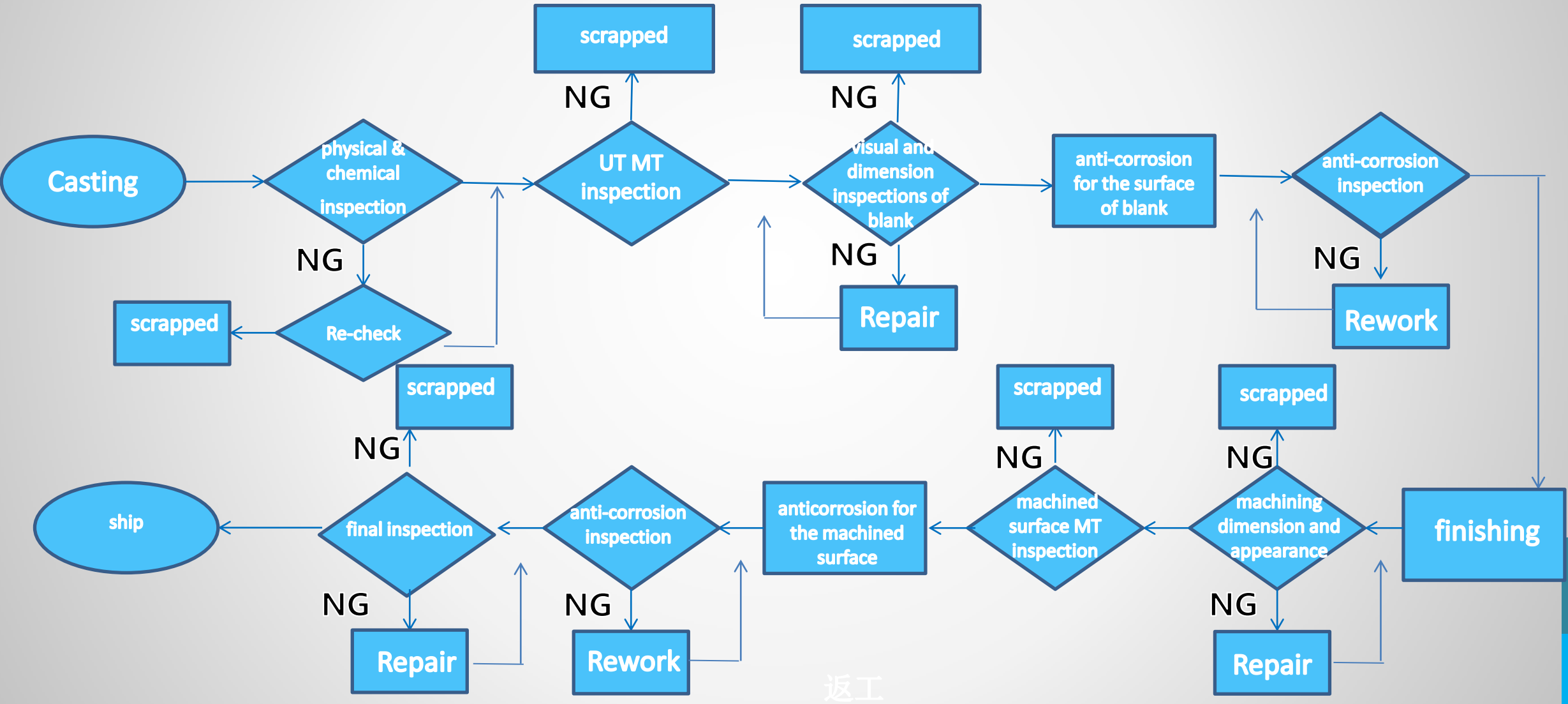
检验流程（以铸件类为例）





检验流程 Quality Inspection Process

以铸件类为例 Take the castings as an example



返工



05

—CONTENTS—



材料表

Material List





材料表

Material List

不锈钢:	CF8M	CF3M	CA-40	CK3MCuN	CN7M	1.4308	1.4408	1.4581
双向钢:	GR-4A	GR-5A	GR-6A	CD4MCuN	2205	1.4517	1.4460	1.4474
铜合金:	CuZn40 Pb2	CuZn40 Pb3	CuZn39Pb2	CuZn40	CuZn10	CuSn6	CuAl5	CuAl10Fe
铝合金:	AlCuMg2	G-Al12		G-AlMg10		G-AlMg5Si		



我们是未来的开创者

Contact : Bo Peng

Phone Number : 008613567912781

E-mail : nbyoulianjx@163.com

Address : No.88 Putuoshan Road, Beilun, Ningbo





感谢您的聆听

Talents develop with diligence,
and knowledge is gained through accumulation.